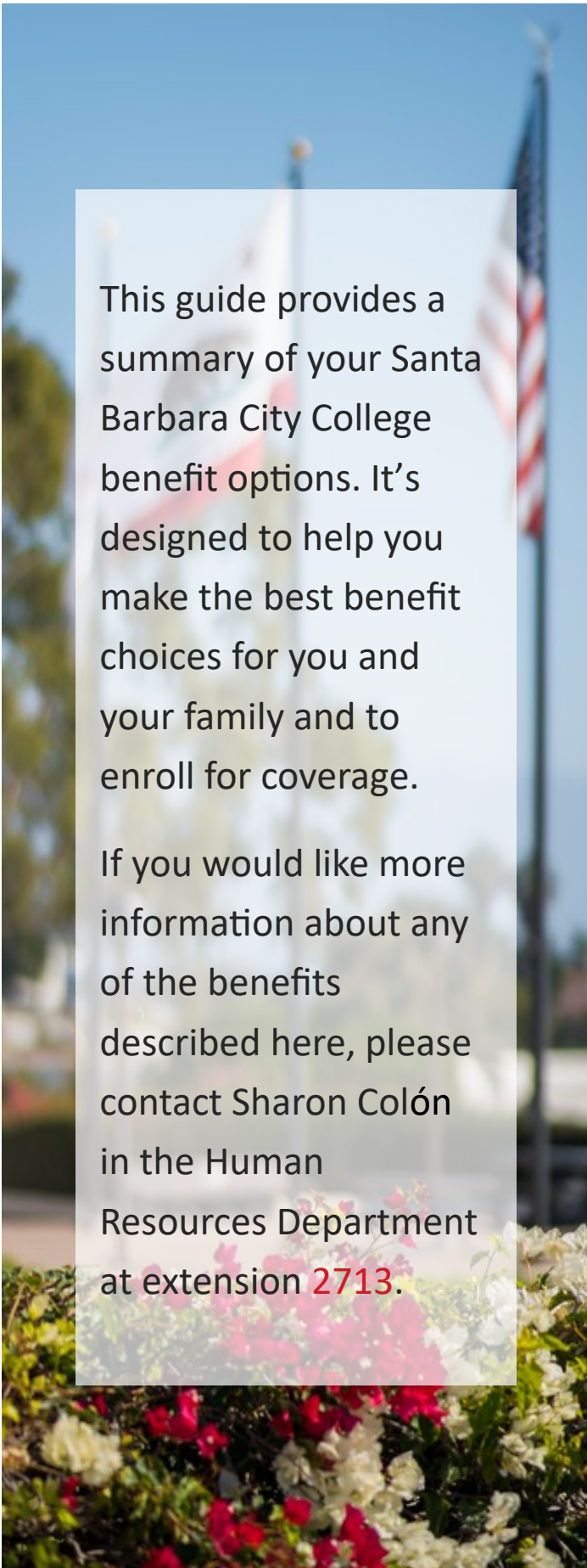




EMPLOYEE **BENEFITS GUIDE**

OCTOBER 1, 2025 - SEPTEMBER 30, 2026

Academic Employees, College Administrators,
Confidential Employees, Classified Employees



This guide provides a summary of your Santa Barbara City College benefit options. It's designed to help you make the best benefit choices for you and your family and to enroll for coverage.

If you would like more information about any of the benefits described here, please contact Sharon Colón in the Human Resources Department at extension **2713**.

Contents

03	Enrollment Information
06	Medical Benefits
08	Additional Health Benefits
14	Life Balance Benefits
15	Get the Most from Your Health Plan
16	Dental Benefits
18	Vision Benefits
19	Income Protection Benefits
20	Supplemental Benefits
21	Tax Savings Benefits
22	Voluntary Retirement Savings Plan
23	Out-of-Pocket Premium Comparison
24	Resources and Contacts
25	Important Information

Enrollment Information

Who May Enroll

If you are a regular full-time employee working at least 20 hours per week, you and your eligible dependents may participate in Santa Barbara City College's benefits program. Your eligible dependents include:

- Spouse: Prior year's Federal Tax Form showing married filing jointly.
- Domestic Partner: A certificate of Registered Domestic Partnership issued by the State of California.
- Children, Stepchildren, and/ or adopted children up to age 26
- Disabled dependents over age 26
- Legal Guardianship up to age 18

When You Can Enroll

As an eligible employee, you may enroll at the following times:

- As a new Certificated employee, you may participate in the District's benefits program on the first day of the month following your first paycheck (September paycheck for Fall semester)
- As a new College Administrator, Confidential Employee, or Classified Employee, your eligibility begins on the first of the month following your date of hire.
- Each year, during open enrollment
- Within 30 days of a qualifying event as defined by the IRS (see Changes To Enrollment on the next page)
- You may enroll in Voluntary Life insurance at any time, subject to proof of good health and carrier approval

Paying For Your Coverage

Santa Barbara City College offers a cafeteria-style plan in which you are given a District allowance and may choose from a number of insurance programs. You are required to enroll in Medical, Dental, Life/AD&D, and Long Term Disability Insurance. You may only waive Medical insurance with the proof of other coverage.

You may elect to have your out-of-pocket premiums deducted before taxes are withheld (called "Premium Conversion"). Some, not all, Voluntary Supplemental products are eligible for this option. Paying for benefits before-tax means that your share of the cost is deducted before taxes are determined, resulting in more take-home pay for you. As a result, the IRS requires that your elections remain in effect for the entire year. You cannot drop or change coverage unless you experience a qualifying event as defined by the IRS.

The District benefit allowance is determined by family status as follows:	Coverage Category	2025 – 2026 District Allowance
	Medical Waiver	\$2,000
	Single	\$11,747.16
	Two-Party	\$22,560.36
	Family	\$31,465.56
Important! You are responsible for any insurance premiums in excess of the District allowance. In some cases, the District allocation is more than is required to participate in the mandatory coverage; any unused allowance reverts to the District.		



Changes To Enrollment

Our benefit plans are effective October 1st through September 30th of each year. There is an annual open enrollment period each year, during which you can make new benefit elections for the following October 1st effective date. Once you make your benefit elections, you cannot change them during the year. However, if you experience a qualifying event as defined by the IRS, you can add or drop a dependent or make changes to your existing benefit elections.

Examples of qualifying events include, but are not limited to the following:

- Marriage, divorce, legal separation or annulment
- Commencement of domestic partnership
- Birth or adoption of a child
- A qualified medical child support order
- Death of a spouse or child
- A change in your dependent's eligibility status
- Loss of coverage from another health plan
- Change in your residence or workplace (if your benefit options change)
- Loss of coverage through Medicaid or Children's Health Insurance Program (CHIP)
- Becoming eligible for a state's premium assistance program under Medicaid or CHIP
- Gain or loss of Entitlement to Medicare/Medicaid coverage

Coverage for a new dependent is not automatic. If you experience a qualifying event, you have 30 days to update your coverage. Please contact the Human Resources Department immediately to complete the appropriate election forms as needed. If you do not update your coverage within 30 days from the qualifying event, you must wait until the next annual open enrollment period to update your coverage.

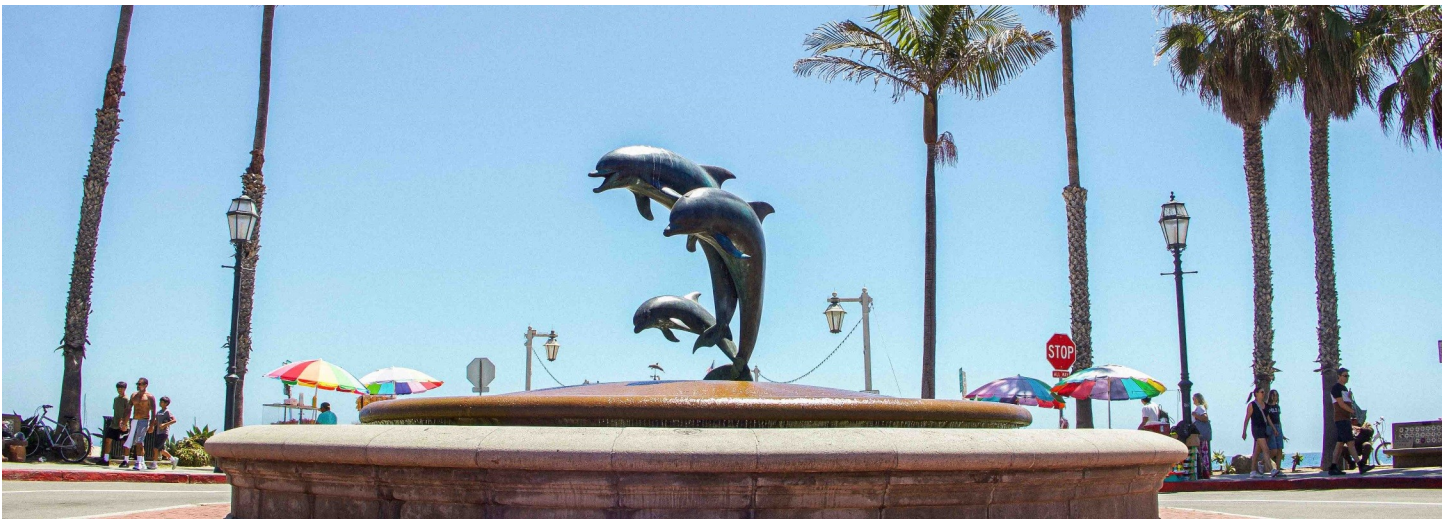
Taxation of Domestic Partner Coverage

If you enroll a dependent who does not meet the definition of an eligible dependent that qualifies for tax-free benefits under the Internal Revenue Code (IRC), the value of the benefits is subject to taxes. Such non-eligible dependents generally include “registered” domestic partners and their children. If your non-eligible dependents do not qualify for tax-free benefits:

- You pay income and payroll taxes on the District’s contribution toward your dependent’s coverage
- Your contributions for dependent coverage will be paid with after-tax dollars

If your dependents’ benefits are subject to taxes, you will be responsible for informing the Human Resources Department. You are responsible for any adverse tax consequences if your dependent is determined to be ineligible for tax-free benefits.

If you still have questions about how domestic partner coverage affects your individual tax situation, you may contact your tax advisor or attorney to determine if your dependent qualifies for tax-free health benefits.



Cash-In Lieu and Medical Waivers

- **Cash-In-Lieu:** If the total cost of the mandatory benefits is less than the District’s maximum allocation, then the remainder shall be relinquished to the District, except for those who are waiving coverage. If [you waive medical insurance](#), you will receive cash-in-lieu of \$2,000, minus the cost of the mandatory Life/AD&D and Disability insurance and minus the cost of Anthem dental, if elected.
- **Medical Waiver:** If you are choosing the waiver, you must signify your acceptance of the Section 125 Flexible Benefits option as well (NOTE: you **do not** need to establish a Section 125 account).

The following procedure must be followed if you wish to apply for a medical waiver:

- Complete and sign the waiver section on the benefits enrollment form.
- Medical insurance is the only benefit which may be waived with proof of other coverage. Evidence of enrollment in another plan will be required and the burden of proof regarding evidence of enrollment shall lie with you.

Important: Please Read: If you waive your District benefits and subsequently lose coverage due to loss of a spouse’s employment or other qualifying event, you must inform the Human Resources Department within 30 days of the loss of coverage. Otherwise, you may not enroll in the District’s plans until the following Open Enrollment period.

If you are waiving medical coverage and will be [retiring](#) between now and June 30, 2026, you **MUST** enroll in the District medical plan during this Open Enrollment period in order to participate in the District medical plan at retirement.

Medical Benefits

Medical Plan Option

Anthem Blue Cross PPO Plans

The Anthem Blue Cross Preferred Provider Organization (PPO) plans allow you to direct your own care. You are not limited to the physicians within the PPO network and you may self-refer to specialists. If you receive care from a physician who is a member of the PPO network, a greater percentage of the entire cost will be paid by the insurance plan.

The PPO plan options allow you to obtain services using a non-network provider; however, you will be responsible for paying any amounts exceeding the maximum allowed amount and you may be responsible for filing claims. Please note that the maximum allowed amount for non-network providers is significantly lower than what providers customarily charge. You must pay all of this excess amount in addition to your copayment.

Pharmacy Generic Substitution

Santa Barbara Community College pharmacy benefits are provided through Navitus.

If you or your physician requests the brand name drug when a generic equivalent is available, you will pay the generic copay plus the difference in cost between the brand and generic. The difference in cost between brand and generic will not count toward the Annual Out-of-Pocket Maximum.



Finding a Medical Provider

- **Anthem Blue Cross PPO:** Go to www.anthem.com/ca or call **(800) 322-5709**. Refer to the “Blue Cross PPO (Prudent Buyer) Large Group” network when prompted.
- **PPO Pharmacy:** Go to www.navitus.com or call **(866) 333-2757**. You may also contact the Costco Mail Order Pharmacy by calling **(800) 607-6861**.



Understand Your Medical Plan!

Confused about medical plan terms like deductibles, copays, coinsurance and out-of-pocket maximums? Check out this quick, entertaining video at <http://video.burnhambenefits.com/terms>.



Medical Benefits: PPOs

Plan Features	Anthem Blue Cross PPO 80%		Anthem Blue Cross PPO 90%		Anthem Blue Cross PPO 100%	
	Network	Non-Network ¹	Network	Non-Network ¹	Network	Non-Network ¹
HEALTH BENEFITS						
Lifetime Maximum	Unlimited		Unlimited		Unlimited	
Deductible (Annual) – Individual / Family	\$300 / \$600		\$100 / \$300		\$0 / \$0	
Co-insurance (Plan Pays)	80%	100% of Max Amount	90%	100% of Max Amount	100%	100% of Max Amount
Physician Office Visit – PCP – Specialist	\$20 Copay \$20 Copay	100% of Max Amount	\$20 Copay \$20 Copay	100% of Max Amount	\$10 Copay \$10 Copay	100% of Max Amount
Telemedicine (MDLIVE)	\$0 Copay	Not Covered	\$0 Copay	Not Covered	\$0 Copay	Not Covered
Out of Pocket Max (includes deductible, copays and coinsurance) – Individual – 2 Party – Family	\$1,000 \$2,000 \$3,000	N/A N/A N/A	\$1,000 \$2,000 \$3,000	N/A N/A N/A	\$1,000 \$2,000 \$3,000	N/A N/A N/A
Inpatient Hospitalization²	Ded, 80%	100% of Max Amount, Max \$600/Day Benefit	Ded, 90%	100% of Max Amount, Max \$600/Day Benefit	100%	100% of Max Amount, Max \$600/Day Benefit
Emergency Services	Ded, \$100 Copay, 80%	Ded, \$100 Copay, 80%	Ded, \$100 Copay, 90%	Ded, \$100 Copay, 90%	\$100 Copay	\$100 Copay
Urgent Care	\$20 Copay	100% of Max Amount	\$20 Copay	100% of Max Amount	\$10 Copay	100% of Max Amount
Preventive Exams	100%	Not Covered	100%	Not Covered	100%	Not Covered
Physical Medicine²	Administered by ASH		Administered by ASH		Administered by ASH	
- Office Visit	Ded, 80%	Not Covered	Ded, 90%	Not Covered	100%	Not Covered
Mental Health/ Substance Abuse	See Physician Office Visit/ Inpatient Hospitalization		See Physician Office Visit/ Inpatient Hospitalization		See Physician Office Visit/ Inpatient Hospitalization	
PHARMACY BENEFITS	NAVITUS		NAVITUS		NAVITUS	
Deductible – Individual – Family	Brand/Specialty \$200 \$500	N/A N/A	\$0 \$0	N/A N/A	\$0 \$0	N/A N/A
Out-of-Pocket Max (includes retail and mail order pharmacy drugs) – Individual – Family	\$2,500 \$3,500	N/A N/A	\$2,500 \$3,500	N/A N/A	\$2,500 \$3,500	N/A N/A
Generic Substitution	Yes	Yes	Yes	Yes	Yes	Yes
Pharmacy Copay – Generic – Brand Name – Supply Limit	Retail \$10 Copay Ded, \$35 Copay 30 Days	Costco \$0 Copay Ded, \$90 Copay 90 Days	Retail \$9 Copay \$35 Copay 30 Days	Costco \$0 Copay \$90 Copay 90 Days	Retail \$9 Copay \$35 Copay 30 Days	Costco \$0 Copay \$90 Copay 90 Days

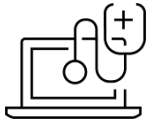
¹ When using the non-network tier, you are responsible for all amounts exceeding the fee schedule.

² Subject to utilization review or medical necessity.

Additional Health Benefits

Additional Health Benefits for SBCC Health Plan Members

You receive the following benefits when you enroll in any Santa Barbara Community College medical plan (through SISC):



Telemedicine Benefits

MDLIVE

Phone and/or video visits are an excellent option for convenient, accessible care when you don't need a doctor to see you in person. They are also a good choice when away from home or if you need short term prescription drug refills. Santa Barbara Community College provides telemedicine coverage with all medical plans through MDLIVE.

- MDLIVE gives you access to doctors 24/7 via phone or secure video for non-emergency medical conditions.
- MDLIVE has a \$0 copay per visit. MDLIVE doctors have 15 years experience practicing medicine on average.
- Pediatricians are on call.
- You can access behavioral health therapy and psychiatrist visits through MDLive
- Access MDLIVE at **(888) 632-2738**, visit mdlive.com/sisc or download the app from the App Store or Google Play

Common Conditions Treated by MDLIVE

Common Conditions Treated by MDLIVE			
General Care		Pediatric Care	
Allergies	Fever	Respiratory Infections	Cold & Flu
Asthma	Headache	Sinus Infections	Constipation
Bronchitis	Infections	Skin Infections	Ear Infections
Cold & Flu	Insect Bites	Sore Throat	Nausea
Diarrhea	Joint Aches	Urinary Tract Infections	Pink Eye
Ear Infections	Rashes	And More!	And More!



Teladoc: Expert Second Opinions

TELADOC
Medical Experts

- A free, 100% confidential benefit available to all Santa Barbara Community College health plan members
- Unlimited access to a top physician if you or a family member receive a difficult diagnosis
- Your Physician Case Manager is backed by a team of leading doctors around the world, and the team collaborates to determine/confirm the correct diagnosis and the optimal plan for treatment
- Your Physician Case Manager helps navigate the ins and outs of the health care system, making care more efficient and helping ease stress
- Receive on-demand support in understanding the course of treatment, what to expect and what the likely results are
- Access Teladoc benefits at **(800) 835.2362** or visit Teladoc.com/sisc

Additional Health Benefits, continued

Additional Health Benefits for Santa Barbara Community College Health Plan

You receive the following benefits when you enroll in any Santa Barbara Community College medical plan (through SISC):



Lark: Diabetes Prevention Program



- If you qualify, you can access to a free 16-week cutting-edge program that helps with weight loss, adopting healthy habits and can significantly reduce your risk of developing diabetes
 - Members are able to choose from an array of national and local programs like Weight Watchers, Retrofit, Jenny Craig and Healthslate.
 - To find out if you qualify, go to lark.com/anthemBC
-



Carrum Health: No Cost Hip, Knee, and Spine Surgical Options



- Access top-quality surgeons at Scripps with no out-of-pocket cost through Carrum Health
 - All medical bills, including deductibles, coinsurance, and even travel expenses are covered at 100%
 - To learn more, call Carrum Health and access their Care Concierge at **(888) 855-7806** who will:
 - Help complete forms
 - Gather and transfer medical records
 - Assist in the selection of a surgeon
 - Schedule the surgery
 - Make travel arrangements and coordinate post-discharge recovery care
-



Centivo Care: Virtual Care



As part of your SISC Anthem PPO Medical Benefits, you have free, 24/7 access to a Care Team who works together to offer you primary care, mental health support, and answers to follow-up care questions through the Centivo Care app. The app is available to you and your dependents at no cost.

Receive help with:

- Diagnoses and treatments
- Prescription refills
- Scheduled video visits or live chat with a primary care physician
- In-network specialist referrals
- Answers to follow-up care questions

To learn more, <https://centivocare.com/sisc>.

Additional Health Benefits, continued

Additional Health Benefits for Santa Barbara Community College Health Plan

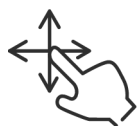
You receive the following benefits when you enroll in any Santa Barbara Community College medical plan (through SISC):



Hinge Health



- Personalized, digitally delivered therapy for back and joint pain
 - To access your Hinge Health benefit, call **(855) 902-2777** or visit hingehealth.com/sisc
-



Lantern: Cancer Support

If you or a covered family member are diagnosed with cancer, you can receive treatment support through Lantern. This benefit provides:



- **Guided support:** a personal oncology nurse will partner with you through every step of your cancer journey
- **Access to excellent care:** Cancer Care Direct gives you access to the top national cancer centers if needed
- **Expert review and advice:** Cancer Care Direct can coordinate expert reviews of your diagnosis and treatment plan, to make sure you're getting the right care, at the right place, at the right time.

To learn more, visit <https://lanterncare.com> or call **(855) 961-4533**.



Vida Digital Coaching



- Anthem plan members have access to Vida Digital Coaching, a virtual care platform that treats a full range of lifestyle, chronic and behavioral health conditions. Examples include nutrition, weight loss, mental health, and building healthy habits
 - To learn more, call **855-442-5885** or visit vida.com/sisc
-



Maven Maternity and Postpartum Support



- A virtual care for pregnancy and postpartum support. Use Maven for 24/7 access to doctors, specialist, coaches, and trustworthy content tailored to your experience.
 - Consult with a care advocate who connects you with trustworthy content delivered by doctors, specialist coaches and other maternity providers to help deal with pregnancy and postpartum concerns.
 - Free 6-month diaper subscription for SISC PPO members who:
 - Enroll during the first or second trimester
 - Have an intro call with a Care Advocate
 - Have two appointments with Maven providers during pregnancy
 - Complete the exit survey when their baby is born
 - To activate your membership and to learn more, download the Maven Clinic app or visit mavenclinic.com/join/SISC
-

Additional Health Benefits, continued

Additional Health Benefits for Santa Barbara Community College Health Plan

You receive the following benefits when you enroll in any Santa Barbara Community College medical plan (through SISC):



Rula: Support With Helping Find an In-Network Therapist

Rula makes it easy to find and book therapy appointments online.



- Complete a quick questionnaire about your therapy preferences and register.
- Choose a therapist from Rula's recommendations.
- Rula will verify your insurance information and will let you know your payment estimate prior to your first appointment.
- You'll receive an confirmation one to two days before your appointment, along with a video link.
- Learn more at <https://rula.com/SISC>. You can also call **(323) 676-7360**.



InsureOne: Free Colorectal Screening



Anthem PPO plan members that are age 45+ have an annual opportunity to receive a free FIT test. This free, easy-to-use home test screens for lower gastrointestinal (GI) tract bleeding that may be caused by colorectal cancer or other lower GI disorders. Why sign up for this test?

Colon cancer may start with no symptoms but is highly preventable.

When caught early, the colorectal cancer 5-year survival rate is 90%. Only 4 of 10 instances are caught early. When caught at later states, the 5-year survival rate drops and individuals may have to receive chemotherapy, radiation therapy, and/or surgery.

Request your free test at <https://my.questforhealth.com>. Register for an account using the registration key SISC2025. You can also call **(855) 623-9355**.



Active & Fit Direct Discounted Gym Memberships:



Active and Fit Direct allows you to enroll in 12,000+ participating fitness centers for only \$28/month (plus \$28 enrollment fee and taxes). There are no annual fees or long-term contracts, and you can switch gyms at any time. In addition:

- You have access to 9,300+ On-Demand Fitness videos.
- 5,700+ Premium Gym Options at exercise studios, outdoor experiences, and others, with 20% - 70% discounts at most locations.
- Use the online fitness tracking feature, which uses a variety of wearable devices and apps.
- To learn more, visit <https://www.anthem.com/ca/sisc/health-wellness>.



Additional Health Benefits, continued

Additional Health Benefits for Santa Barbara Community College Health Plan

You receive the following benefits when you enroll in any Santa Barbara Community College medical plan (through SISC):



Quest Wellness Screening

All SISC medical plan members are eligible for a free wellness screening through Quest Diagnostics. This biometric screening can provide important insights into your health risks. When you complete this screening, you will know your health numbers and can connect with your doctor to help manage health risks and prevent chronic disease.



Quest Diagnostics has more than 2,250 Patient Service Centers nationwide where you can get your screening. Here's how to schedule an appointment:

Go to [My.QuestForHealth.com](https://www.myquestforhealth.com).

Use Registration Key: SISC2025.

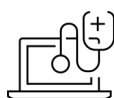
In the **Wellness Screening** section, under Patient Service Center, select **Schedule a Screening**,

If you schedule as a walk-in, you may be required to make an appointment upon check-in.

You will receive an email when your results are ready to view online.

If you'd like to speak with Quest, you can reach them at [\(855\) 623-9355](tel:8556239355).

Please note, any member awards will be distributed to the email used at registration within 30 days of the completed appointment.



MIDI: Expert Menopausal Relief Telehealth

Midi

Anthem PPO plan members can now get expert menopausal telehealth support. Hormonal changes in midlife can bring on a host of symptoms that are often misunderstood. Midi's expert clinicians can help you find safe, effective solutions menopause-related issues such as:

- Trouble sleeping
- Weight changes
- Brain fog
- Hair & skin changes
- Hot flashes
- Painful sex, low libido
- Period problems
- Bone loss
- Mood issues
- Menopause after cancer
- Menopause with cancer risk

Midi connects you to expert clinicians via virtual visits. After discussing your symptoms and health history, they help you get any necessary lab tests and create a personalized care plan. Treatments may include:

- FDA-approved hormonal medications
- Non-hormonal medications
- Supplements and botanicals
- Lifestyle coaching
- Wellness therapies
-

To start your Midi journey, visit www.joinmidi.com/sisc.

Additional Health Benefits for Santa Barbara Community College Health Plan

You receive the following benefits when you enroll in any Santa Barbara Community College medical plan (through SISC):



Costco Free Generic Medications and Discounts:



Costco makes it easy for SISC Anthem Blue Cross members to receive a 90 day supply of your long-term or maintenance medications. In addition, when you use the Costco pharmacy, your generic medications will be free of charge. Visit any Costco retail location or use the mail order feature and benefit by having your prescriptions delivered to your door, saving you a trip to the pharmacy.

Here's how it works:

- Take your prescription to any Costco pharmacy. You do not need to be a Costco member.
- Present your insurance card to the pharmacist.
- Get your generic medications (excluding some narcotic plan medications and some cough medications) for free.

You can get you and your covered family members' prescription delivered from your local Costco for free with Instacart. You can simply call your local Costco and let the pharmacy staff know that you would like to transfer your prescription.

- Once a prescription is filled a text is sent with the link to access Instacart for free.

For more information, call (800) 774-2678 (press 1) or visit [costco.com](https://www.costco.com).



Life Balance Benefits

Employee Assistance Program

Santa Barbara Community College provides an Employee Assistance Program (EAP) to support employees in balancing their lives, both personal and professional.

	Anthem Employee Assistance Program
Eligibility	All employees and their household members
Primary Benefit	The Employee Assistance Programs (EAPs) provide confidential support in balancing a wide array of challenges in areas such as: <ul style="list-style-type: none">• Relationship difficulties• Managing change and stress• Legal and financial issues• Marriage, family or parenting concerns
Counselling Sessions	Up to 6 free counselling sessions per issue per benefit year
Learn to Live Wellbeing Support	<ul style="list-style-type: none">• Access free, customized online programs based on proven principals of Cognitive Behavioral Therapy (CBT)• Programs are confidential, accessible anywhere, and participants learn effective ways to manage stress, depression, anxiety, substance use and sleep issues
Additional Benefits	<ul style="list-style-type: none">• Identity monitoring and theft resolution services through IDnotify• Financial calculators to support your financial wellbeing• Web and mobile access to myStrength:• Helps you learn to reduce stress, anxiety, depression or substance abuse• Helps keep you motivated with engaging activities that help you learn new ideas Online resources for a wide array of topics, including both a library of articles and on-demand seminars
How to Access Benefits	<ul style="list-style-type: none">• Call (800) 999-7222• Visit anthemEAP.com (to log in, enter SISC as the program name).



Get the Most from Your Health Plan

Tips For Using Your Health Benefits

1. Ask Questions

If you are having a procedure or planning an upcoming procedure, make sure you know how the procedure will be covered and what your out-of-pocket cost will be, if any.

2. Utilize Free Preventive Care Benefits to Stay Healthy.

Preventive care benefits are covered at no charge to you, in-network. To learn about the host of items covered for free, visit www.healthcare.gov/coverage/preventive-care-benefits. You will be surprised at the number of tests and screenings for adults, women, and children that are covered under the Affordable Care Act. Be careful—if you visit your doctor for a preventive screening but also have them look at your sore throat, the office visit will be billed the same as a regular visit!

3. Get the Right Health Care and Save Money

Choosing the right care for your medical situation will help save you money out-of-pocket:

- **Doctor's Office** or **Telemedicine** visit: These are the best choices for non-urgent medical issues.
- **Urgent Care**: This is the best choice for non-life threatening medical issues that require immediate in-person care when you can't get an appointment for a Doctor's Office Visit.
- **Emergency Room**: You should use the Emergency Room for life threatening emergencies or for other issues that require immediate in-person medical care outside Urgent Care hours.



Dental Benefits

Dental Plan Options

Delta Dental and Anthem Dental PPO Plans

With the Preferred Provider Organization (PPO) dental plans, you may visit a PPO dentist and benefit from the negotiated rate or visit a non-network dentist. When you utilize a PPO dentist, your out-of-pocket expenses will be less. You may also obtain services using a non-network dentist; however, you will be responsible for the difference between the covered amount and the actual charges, and you may be responsible for filing claims.

The Delta Dental plans are only available if you enroll in a Medical plan option. The Anthem Dental plan is available regardless of whether you enroll in or waive a Medical plan option.

New Replacing Delta Dental Premier effective 10/1/25

Plan Features	Delta Dental Incentive Plan		Delta Dental PPO Plan		Anthem Dental PPO Plan	
DENTAL BENEFITS	Dental PPO / Premier	Non-Network	Delta Dental PPO	Non-Network	Anthem Dental PPO	Non-Network
Calendar Year Maximum	\$2,500 / \$2,000		\$3,000	\$1,000	\$2,000	
Deductible (Annual) – Individual – Family	\$0 \$0		\$0 \$0	\$25 \$75	\$50 \$150	
Preventive (Plan Pays)	70%-100%	70%-100%	100%	50%	100% Deductible Waived	50%
Basic Services (Plan Pays) Fillings, root canals, periodontics, tissue removal, sealants and oral surgery	70%-100%	70%-100%	100%	50%	80%	50%
Major Services (Plan Pays) Crowns, inlays, onlays, restorations, bridges and dentures	70%-100%	70%-100%	100%	50%	50%	50%
Prosthodontic Services (Plan Pays)	50%	50% of	50%	50%	50%	50%
Orthodontia – Covered Members – Coinsurance – Lifetime Maximum	Not Covered N/A N/A		Children & Adults 100% \$3,000		Children & Adults 100% \$1,500	



Finding a Dental Provider

- **Delta Dental:** Go to www.deltadentalins.com or call **(866) 499-3001**. Refer to the PPO network when prompted.
- **Anthem Dental:** Go to www.anthem.com/ca/find-care or call **(844) 729-1565**. Refer to the PPO network when prompted.

Dental Benefits

Delta Dental Plan Perks

SmileWay Program*

Oral health issues can exacerbate other medical conditions, including heart disease. If you have medical conditions that affects your oral health. Delta Dental's SmileWay program can help support your good health with free access to additional teeth and gum cleanings.

To be eligible for SmileWay, you must be diagnosed with one of the following conditions:

- Amyotrophic lateral sclerosis
- Diabetes
- Huntington's disease
- Opioid misuse and addiction
- Sjogren's syndrome
- Cancer
- Heart Disease
- Joint replacement
- Parkinson's disease
- Stroke
- Chronic kidney disease
- HIV/AIDS
- Lupus
- Rheumatoid Arthritis

SmileWay benefits include:

100% coverage for one scaling and root planning procedure per quadrant and 100% coverage for four of the following in any combination:

- Prophylaxis
- Periodontal maintenance procedure
- Scaling in the presence of moderate or severe gingival inflammation

To learn more about SmileWay, visit www1.deltadentalins.com/members/smileway-wellness-benefits.html.

* This coverage is subject to any applicable maximums and deductibles under the terms and conditions outlined in your plan's Evidence of Coverage.



Vision Benefits

EyeMed Vision Plan

The EyeMed Vision plan provides professional vision care and high quality lenses and frames through a broad network of optical specialists. You will receive richer benefits if you utilize a network provider. If you utilize a non-network provider, you will be responsible to pay all charges at the time of your appointment and will be required to file an itemized claim with EyeMed Vision.

The EyeMed Vision network includes access to independent ophthalmologists and optometrists, as well as LensCrafters, Pearle Vision, Target Optical and Independent Provider Network.

The Vision plans are only available if you enroll in a Medical plan option.

Plan Features	EyeMed Vision Plan for PPO Medical Participants	
	Insight Network	Non-Network
VISION BENEFITS		
Examination (12 Months)	100%	\$40 Reimbursement
Lenses (24 Months)		
– Single Vision	100%	\$30 Reimbursement
– Bifocal	100%	\$50 Reimbursement
– Trifocal	100%	\$70 Reimbursement
– Progressive	100%	\$50 Reimbursement
– Lenticular	100%	\$70 Reimbursement
Frames (24 Months)	\$200 Allowance– PLUS Provider \$150 Allowance– Network Provider (increases to \$180 on 1/1/26)	\$105 Reimbursement
Contact Lenses (24 Months)	In Lieu of Frames and Lenses	
– Cosmetic / Elective	\$150 Allowance	\$105 Benefit
– Medically Necessary	100%	\$300 Reimbursement
Laser Vision Correction	Discounts Apply	Not Covered

Perks

- Members using an EyeMed PLUS provider will have an extra \$50 towards their frame allowance
- 20% off balance on frames
- 15% off balance on conventional contact lenses
- **Access to the full \$150 frame allowance when purchasing frames at Walmart, Sam’s Club or Costco**



Finding a Vision Provider

Go to www.eyemed.com and use the “Insight Network” drop down option for your provider search or call (866) 800-5457.

Income Protection Benefits

Life and AD&D Insurance

Lincoln Financial Group Basic Life and AD&D Insurance

Life insurance protects your family or other beneficiaries in the event of your death while you are still actively employed with the District. Santa Barbara City College pays for coverage, offered through Lincoln Financial, in the amount of \$50,000 for you, \$1,500 for your spouse, and \$1,500 for each of your dependent children over the age of 6 months. If your death is due to a covered accident or injury, your beneficiary will receive an additional amount through Accidental Death and Dismemberment (AD&D) coverage.

Lincoln Financial Group Voluntary Life Insurance

In addition to the District provided Basic Life and AD&D benefits, you may elect to purchase additional Term Life insurance at discounted group rates provided by Lincoln Financial. You pay for this coverage with after-tax dollars through convenient payroll deductions.

- **Employee Coverage:** You may purchase coverage for yourself in increments of \$10,000 up to a maximum benefit of \$500,000, not to exceed 5 times your annual salary. The face value of the policy will be reduced by 50% when you reach the age of 70. At the age of 75, benefits will be reduced to 30% of the original amount, and reduced an additional 20% at the age of 80.
- **Spouse Coverage:** If you buy coverage for yourself, you may also purchase coverage for your eligible spouse. Benefits for your spouse are available in increments of \$5,000 to a maximum benefit of \$500,000 and may not exceed 100% of your employee election. Please note that your eligible spouse must be younger than 70 years of age to participate in this benefit.
- **Child(ren) Coverage:** If you buy coverage for yourself, you may also purchase coverage for your eligible dependent child(ren). Benefits for your children are available in increments of \$1,000, with a minimum of \$2,000, to a maximum benefit of \$10,000.

Guarantee Issue

Guarantee issue is a pre-approved amount of coverage that does not require you to provide proof of good health, and is available to you during your initial eligibility period (upon hire). Guarantee issue is available in the following amounts:

- **Employee** = \$250,000
- **Spouse** = \$50,000
- **Child(ren)** = \$10,000

If you are no longer in your initial eligibility period, you may enroll in Voluntary Life insurance anytime during the year as long as you provide proof of good health. To provide proof of good health, you will be asked to complete a health questionnaire and are subject to insurance carrier approval. Lincoln Financial may approve or decline coverage based on a review of your health history.

Disability Insurance

Mutual of Omaha Long Term Disability Insurance

Santa Barbara City College offers you Long Term Disability (LTD) to provide income replacement if you become disabled for an extended period of time, through Mutual of Omaha. If you become totally and permanently disabled, benefits begin 90 days after the start of your illness or injury. The LTD benefit will cover 66.67% of your pre-disability earnings up to a maximum benefit of \$5,000 per month.

Supplemental Benefits



Voluntary Plan Options

American Fidelity

You may purchase individual policies from American Fidelity including Accident Only Insurance, Cancer Insurance, Annuities and Life Insurance. Your premiums are paid through payroll deductions, many on a pre-tax basis. American Fidelity policies offer direct-to-the-policyholder cash payouts to help cover what other insurance doesn't. All of the American Fidelity individual policies are portable, which means that you can keep them should you change jobs, or retire, with no increase in premiums. Please contact American Fidelity for benefits and rates.

Accident Only Insurance

American Fidelity's Limited Benefit Accident Only Plan can help prepare you if and when an accident happens.

Cancer Insurance

This coverage can help relieve some of the costs associated with cancer. If you have not received a diagnosis of cancer and have not received any cancer treatment in the last 10 years, you may apply.

Annuities

Offers both fixed and variable annuities to help you get on the road to a financially secure retirement. Planning now can help you be able to meet your retirement needs in the future.

Life Insurance

A portable life insurance policy can offer the protection you need at a price you can afford.

Short-Term Disability Income Insurance

This plan is designed to financially help you in the event of a covered injury or illness.



Tax Savings Benefits



Health Care and Dependent Care Section 125

Flexible Benefit Plan

Each year during Open Enrollment you decide how much you want to contribute to one or both of the American Fidelity Flexible Benefit Plans. (FBPs). The FBPs allow you to use pre-tax dollars to pay for certain health and dependent care expenses. Each year, you decide how much to contribute on a pre-tax basis. The annual amount you elect is deducted from your paycheck in equal amounts each pay period. As you incur eligible expenses during the year, you can request reimbursement with your untaxed money from the appropriate account.

Note: You must re-enroll in this program each year you wish to participate in an FBP. **Your enrollment for the previous year does not automatically roll over.**

Health Care FBP

This plan is used to pay for medical, dental or vision expenses not covered under your health plans, such as deductibles, coinsurance, copays for you and your eligible dependents. Employees may defer up to \$3,300 pre-tax per year.

Dependent Care FBP

This plan is used to pay for eligible expenses you incur for child care, or for the care of a disabled dependent, while you work. Employees may defer up to \$5,000 pre-tax per year. The Dependent Care FBP **does not** pay for medical care for your dependents.

Important: Please Read: FSAs offer sizable tax advantages. The trade-off is that these accounts are subject to strict IRS regulations, including the use-it-or-lose-it rule. According to this rule, you must forfeit any money left in your account(s) after your expenses for the year have been reimbursed. The IRS does not allow the return of unused account balances at the end of the plan year, and remaining balances cannot be carried forward to a future plan year.

If you are unable to estimate your health care and dependent care expenses accurately, it is better to be conservative and underestimate rather than overestimate your expenses.

Example: How You Can Save Money with the Health Care FSA

Dan estimates that he will have approximately \$1,200 in out-of-pocket health care expenses next year and is looking to increase his take-home pay.

	Without the Health Care FSA	With the Health Care FSA
Gross Pay (Annual)	\$35,000	\$35,000
Pre-tax Health Care FSA	\$0	\$1,200
Taxable Gross Income	\$35,000	\$33,800
Payroll Taxes (at 30%)	\$10,500	\$10,140
Health Care Cost	\$1,200	\$0
Net Pay	\$23,300	\$23,660
Annual Net Pay Increase	\$0	\$360

It is important to note that your FSA elections will expire each year on September 30th. If you plan to participate in the FSA for the upcoming plan year, you are required to re-enroll.



How Flexible Benefit Plans (AKA Flexible Spending Accounts) Work

Watch this quick video to better understand how the Flexible Spending Accounts work:
<http://video2.burnhambenefits.com/fsa>.

Voluntary Retirement Savings Plan

Retirement Savings Plans

Santa Barbara Community College provides all employees with the opportunity to build savings for long term financial goals, such as retirement. You are eligible to contribute to any of the 403(b) or 457(b) plans administered by Envoy Plan Services.

As the Third party Administrator (TPA), Envoy provides legal and regulatory services that ensure compliance with IRS and state laws. These administration services have a monthly charge of \$3 (September to June) and paid by per participating employee.

Getting Started:

- Go to www.envoyplanservices.com
- Click onto Client Center; then click on your state, country and employer.
- You are now on your employer's home page on the Envoy Plan Services Website
 - 403(b) / 457(b) Providers—A complete list of approved providers currently available in the plan is listed on the employer's home page
 - Forms Tab—A forms tab is at the top of the home page. Clicking on this tab will provide you with definitions. Enrolment Procedures, Plan Highlights, Salary Reduction Agreements, Transaction Request Instructions and the Transactions Request Form.
 - Frequently Asked Questions—A list of frequently asked questions and the responses to these questions is provided for your reference.
 - Educational Videos are provided for your viewing.
- For questions, call Customer Service at **(800) 248-8858**.

Maximum Contribution limits for 2025

Year	403(b) TSA	457(b) DCP	Total
2025 Basic Limit	\$23,500	\$23,500	\$47,000
Age 50+ Catch-up	\$7,500	\$7,500	\$15,000
Total	\$31,000	\$31,000	\$ 62,000

What is a 403(b) plan

A 403(b) plan is a tax advantaged retirement savings investment plan available for school employees. All SBCC employees (except student workers) may contribute a portion of salary into a 403(b) plan. Payroll deduction salary deferral can be made pre-tax that allows you to receive a tax deduction in the year of the salary deferral and all earnings on your account balances are also tax deferred. You are then able to defer all income taxes until you withdraw money from your . Deferrals can also be made post-tax, known as Roth 403(b), so you are paying the income taxes today on your contributions. The earnings on your account balance are tax deferred and when you retire you never pay income tax on any of the income distributions you receive (subject to IRS requirements).

What is a 457(b) plan

A 457(b) Deferred Compensation Plan (457 Plan) is a tax-favored retirement saving investment plan available to school employees. All SBCC employees (except student workers) may contribute a portion of their salary into a 457(b) plan. Payroll deduction salary deferral can be made pre-tax that allows you to receive a tax deduction in the year of the salary deferral and all earnings on your account balances are also tax deferred. You are then able to defer all income taxes until you withdraw money from your account. Deferrals can also be made post-tax, known as Roth 457(b), so you are paying the income taxes today on your contributions. The earnings on your account balance are tax deferred and when you retire you never pay income tax on any of the income distributions you receive (subject to IRS requirements).

Out-of-Pocket Premium Comparison

	Delta Incentive			Delta PPO			Anthem Dental PPO		
	Dental Option #1			Dental Option #2			Dental Option #3		
	Single	2 Party	Family	Single	2 Party	Family	Single	2 Party	Family
Blue Cross PPO 100%									
Medical / Vision	\$13,237.20	\$25,838.40	\$36,315.60	\$13,237.20	\$25,838.40	\$36,315.60	\$13,237.20	\$25,838.40	\$36,315.60
Dental	\$516.00	\$1,068.00	\$1,464.00	\$604.80	\$1,260.00	\$1,977.60	\$679.56	\$1,372.32	\$2,029.44
Basic Life	\$91.32	\$91.32	\$91.32	\$91.32	\$91.32	\$91.32	\$91.32	\$91.32	\$91.32
Long Term Disability	\$302.64	\$302.64	\$302.64	\$302.64	\$302.64	\$302.64	\$302.64	\$302.64	\$302.64
TOTAL PREMIUM	\$14,147.16	\$27,300.36	\$38,173.56	\$14,235.96	\$27,492.36	\$38,687.16	\$14,310.72	\$27,604.68	\$38,739.00
DISTRICT CONTRIBUTION	\$11,747.16	\$22,560.36	\$31,465.56	\$11,747.16	\$22,560.36	\$31,465.56	\$11,747.16	\$22,560.36	\$31,465.56
EMPLOYEE	\$2,400.00	\$4,740.00	\$6,708.00	\$2,488.80	\$4,932.00	\$7,221.60	\$2,563.60	\$5,044.30	\$7,273.40
EMPLOYEE 10thly	\$240.00	\$474.00	\$670.80	\$248.88	\$493.20	\$722.16	\$256.36	\$504.43	\$727.34
Blue Cross PPO 90%									
Medical / Vision	\$12,133.20	\$23,630.40	\$33,171.60	\$12,133.20	\$23,630.40	\$33,171.60	\$12,133.20	\$23,630.40	\$33,171.60
Dental	\$516.00	\$1,068.00	\$1,464.00	\$604.80	\$1,260.00	\$1,977.60	\$679.56	\$1,372.32	\$2,029.44
Basic Life	\$91.32	\$91.32	\$91.32	\$91.32	\$91.32	\$91.32	\$91.32	\$91.32	\$91.32
Long Term Disability	\$302.64	\$302.64	\$302.64	\$302.64	\$302.64	\$302.64	\$302.64	\$302.64	\$302.64
TOTAL PREMIUM	\$13,043.16	\$25,092.36	\$35,029.56	\$13,131.96	\$25,284.36	\$35,543.16	\$13,206.72	\$25,396.68	\$35,595.00
DISTRICT CONTRIBUTION	\$11,747.16	\$22,560.36	\$31,465.56	\$11,747.16	\$22,560.36	\$31,465.56	\$11,747.16	\$22,560.36	\$31,465.56
EMPLOYEE	\$1,296.00	\$2,532.00	\$3,564.00	\$1,384.80	\$2,724.00	\$4,077.60	\$1,459.60	\$2,836.30	\$4,129.40
EMPLOYEE 10thly	\$129.60	\$253.20	\$356.40	\$138.48	\$272.40	\$407.76	\$145.96	\$283.63	\$412.94
Blue Cross PPO 80%									
Medical / Vision	\$10,837.20	\$21,098.40	\$29,607.60	\$10,837.20	\$21,098.40	\$29,607.60	\$10,837.20	\$21,098.40	\$29,607.60
Dental	\$516.00	\$1,068.00	\$1,464.00	\$604.80	\$1,260.00	\$1,977.60	\$679.56	\$1,372.32	\$2,029.44
Basic Life	\$91.32	\$91.32	\$91.32	\$91.32	\$91.32	\$91.32	\$91.32	\$91.32	\$91.32
Long Term Disability	\$302.64	\$302.64	\$302.64	\$302.64	\$302.64	\$302.64	\$302.64	\$302.64	\$302.64
TOTAL PREMIUM	\$11,747.16	\$22,560.36	\$31,465.56	\$11,835.96	\$22,752.36	\$31,979.16	\$11,910.72	\$22,864.68	\$32,031.00
DISTRICT CONTRIBUTION	\$11,747.16	\$22,560.36	\$31,465.56	\$11,747.16	\$22,560.36	\$31,465.56	\$11,747.16	\$22,560.36	\$31,465.56
EMPLOYEE	\$0.00	\$0.00	\$0.00	\$88.80	\$192.00	\$513.60	\$163.56	\$304.32	\$565.44
EMPLOYEE 10thly	\$0.00	\$0.00	\$0.00	\$8.88	\$19.20	\$51.36	\$16.36	\$30.43	\$56.54

Mutual of Omaha LTD is based on salary of \$84,065.

Family coverage is based on a party of 3 or more members.



Resources and Contacts

Below is a list of insurance carrier contacts should you require assistance with your benefit questions following open enrollment. If you are unable to resolve your issues or questions with the insurance carriers, please contact Sharon Remacle.

Plan	Phone	Website
MEDICAL BENEFITS		
Anthem Blue Cross PPO Plans	(800) 322-5709	www.anthem.com/ca/sisc
Navitus Pharmacy Services	(866) 333-2757	www.navitus.com
Costco Mail Order Pharmacy	(800) 607-6861	www.costco.com/pharmacy/home-delivery
Chiropractic (American Specialty Health)	(800) 678-9133	www.ashcompanies.com
DENTAL BENEFITS		
Delta Dental PPO Plans	(866) 499-3001	www.deltadentalins.com
Anthem Dental PPO Plan	(844) 729-1565	www.anthem.com/ca
VISION BENEFITS		
EyeMed Vision Plan	(866) 800-5457	www.eyemed.com
INCOME PROTECTION BENEFITS		
Lincoln Financial Life and AD&D Insurance	(661) 636-4214	www.lfg.com
Mutual of Omaha Long Term Disability Insurance	(800) 877-5176	www.mutualofomaha.com
SUPPLEMENTAL BENEFITS		
American Fidelity Accident Only Insurance		
American Fidelity Cancer Insurance	(800) 662-1113	www.afadvantage.com
American Fidelity Life Insurance		
American Fidelity Annuities	(800) 662-1106	
TAX SAVINGS BENEFITS		
American Fidelity Flexible Benefit Plan	(800) 325-0654	www.afadvantage.com
VOLUNTARY RETIREMENT PLAN		
Envoy Plan Services	(877) 513-2272	www.envoyplanservices.com
BENEFITS PROVIDED BY SISC		
Health Smart's Health Improvement Program	Call SISC - See Medical ID Card	N/A
MDLIVE	(888) 632.2738	www.mdlive.com/sisc
Condition Care	(800) 621-2232	N/A
Teladoc—Second Opinion	(800) 835.2362	www.teladoc.com/sisc
Lark Diabetes Prevention Program	N/A	www.lark.com/anthemBC
Maven Maternity & Postpartum Support	N/A	www.mavenclinic.com/join/sisc

Important Information

The Affordable Care Act and You

The Affordable Care Act (ACA) requires nearly every American to be enrolled in medical coverage or pay a penalty. This is referred to as the individual mandate. You have several options to satisfy this requirement:

- Enroll in a medical plan offered by Santa Barbara City College or another group plan.
- Purchase coverage through a health insurance marketplace.
- Enroll in coverage through a government sponsored program.
- Have no coverage and incur a tax penalty.

Because Santa Barbara City College's medical plans are considered affordable and meet minimum value under Health Care Reform, you will not generally see lower premiums or out-of-pocket costs through the marketplace. In addition, employer contributions to your medical benefits will be lost if you choose to purchase coverage through the marketplace, and your portion of medical premiums will no longer be paid via payroll deductions on a pre-tax basis.

For more information on your coverage options, please visit www.healthcare.gov.

Annual Notices

Various state and federal laws require that employers provide disclosure and annual notices to their plan participants. Santa Barbara City College has posted all federally required annual notices on our SBCC intranet for you to download and read at your convenience.

The following is a list of the annual notices:

- Medicare Part D Notice of Creditable Coverage
- HIPAA Notice of Privacy Practices
- Women's Health and Cancer Rights Act (WHCRA)
- Newborns' and Mothers' Health Protection Act
- Special Enrollment Rights
- Medicaid & Children's Health Insurance Program

Summary of Benefits & Coverage (SBC)

Health insurance issuers and group health plans are required to provide you with an easy-to-understand summary about your health plan's benefits and coverage, referred to as a Summary of Benefits and Coverage (SBC). This guide is designed to help you understand the medical plan options offered to you by Santa Barbara City College. Please refer to the SBC and carrier contracts provided by Blue Shield or Anthem Blue Cross for additional plan details.

Online Benefits Information

Access your benefits information whenever you want, from home or any place where you have internet access, by visiting the Santa Barbara City College website at http://www.sbcc.edu/hr/benefits/contacts_information.php.

This page provides addresses, telephone numbers and links to various benefit sites.



Formerly Burnham Benefits

2211 Michelson Drive, Suite 1200 | Irvine, California 92612

Telephone: (949) 833-2983 | Fax: (949) 833-9549

Learn more at www.baldwin.com

This Employee Benefits Guide provides an overview of some of your benefit plan choices. It is for informational purposes only. It is not intended to be an agreement for continued employment. Neither is it a legal plan document. If there is a disagreement between this guide and the plan documents, the plan documents will govern.

In addition, the plans described in this guide are subject to change without notice. Continuation of any benefit plan or coverage is at the company's discretion and in accordance with federal and state laws. If you need additional information or have any questions about the benefits program, please contact the Human Resources Department.